

D.T. 1.5

COL. 306 0324 00

EQUIP. TYPE R3904/URR EXP. NO.

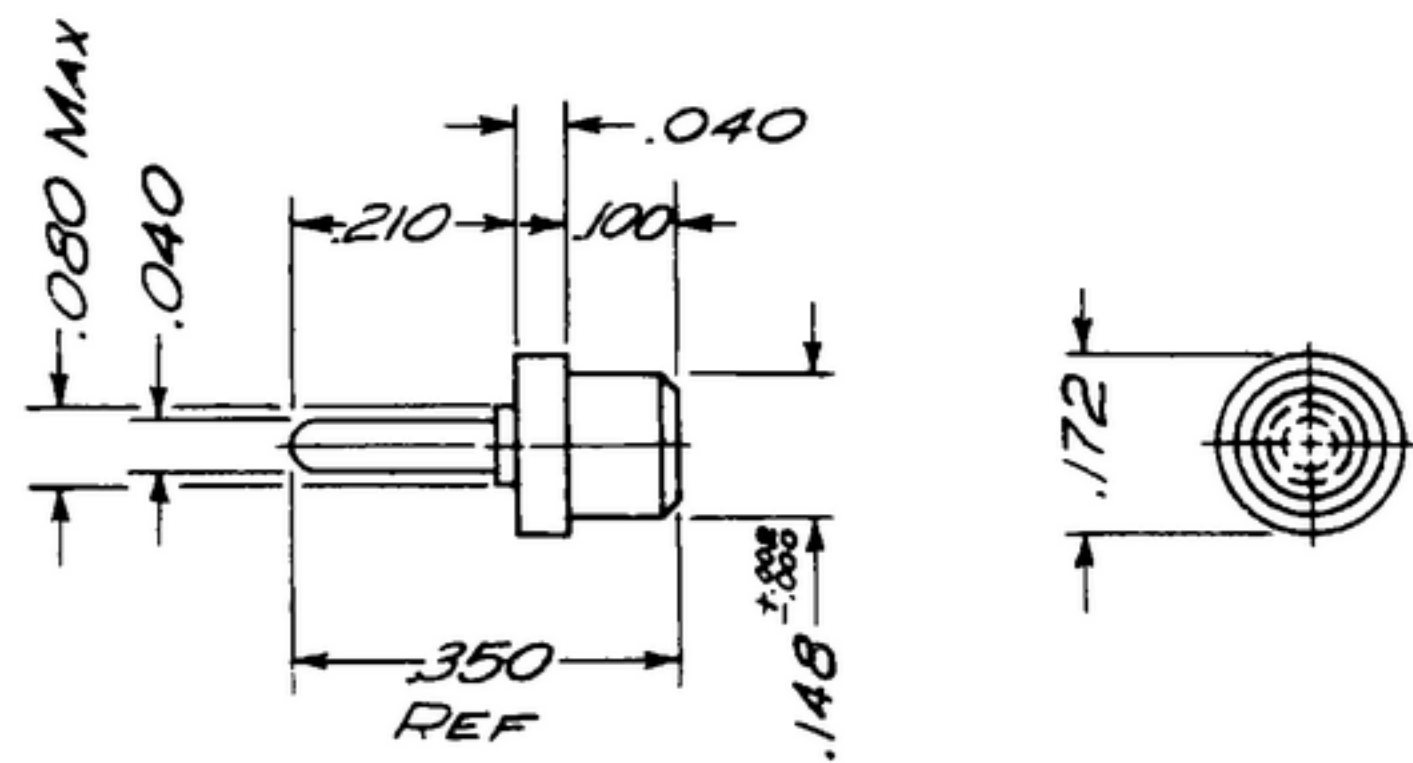
NOTICE: WHEN GOVERNMENT DRAWINGS, SPECIFICATIONS, OR OTHER DATA ARE USED FOR ANY PURPOSE OTHER THAN IN CONNECTION WITH A DEFINITELY RELATED GOVERNMENT PROCUREMENT OPERATION, THE UNITED STATES GOVERNMENT THEREBY INCURS NO RESPONSIBILITY AND ANY OBLIGATION WHATSOEVER; AND THE FACT THAT THE GOVERNMENT MAY HAVE FORMULATED, FURNISHED, OR IN ANY WAY SUPPLIED THE SAID DRAWINGS, SPECIFICATIONS, OR OTHER DATA IS NOT TO BE CONSIDERED BY IMPLICATION OR OTHERWISE AS IN ANY MANNER ENDORSING THE HOLDER OR ANY OTHER PERSON OR CORPORATION, OR CONVEYING ANY RIGHTS OR PERMISSIONS TO MANUFACTURE, USE, OR SELL ANY PATENTED INVENTION THAT MAY IN ANY WAY BE RELATED THERETO.

THIS DOCUMENT HAS BEEN PURCHASED BY THE GOVERNMENT AND MAY BE REPRODUCED AND USED IN CONNECTION WITH ANY GOVERNMENT PROCUREMENT OR MAINTENANCE OPERATION.

* FOR INFORMATION ONLY, CONTRACTOR MAY AT HIS OPTION DEVIATE FROM THESE PROCESS DETAILS.

* SWE APPROVAL
SYM PR10042-11

REVISIONS			
SYM	DESCRIPTION	DATE	APPROVAL
A ₂	A. ADDED NOTE 5 A ₂ M310 WAS M317	13 NOV 59	42428-PC 59-AI-51 REV'D PME



NOTES:

1. PART MAY BE #ST-SMI-1 AS SUPPLIED BY SEAELECTRO CORP, NEW ROCHELLE, NEW YORK, OR EQUAL, PROVIDING IT MEETS THE FOLLOWING REQUIREMENTS & DIMENSIONS SHOWN.

INSULATION: TEFLON AS SUPPLIED BY E. I. DU PONT, DE NEMOURS & CO, INC, WILMINGTON 98, DEL, OR EQUAL.

METAL PARTS: BRASS

A₂ FINISH BRASS PARTS: M310 PER SPEC MIL-F-14072

A₁ VOLTAGE RATING: 750V RMS 60 CPS
TEMPERATURE RANGE: -65°C TO 200°C

COLLINS PART NO.	ITEM	REQD	PART NO.	DESCRIPTION	MATL	MATL SPEC
LIST OF MATERIAL						
COLLINS PART NO. 559 0223 002						

COLLINS NO.	QTY	NEXT ASSY	USED ON
558 0386 002	4	SM-B-249036	
558 0379 002	3	SM-B-249029	SC-DL-2A8715
APPLICATION			

DRAWN NUGEN
CHECKED [Signature]
APPROVED [Signature]

UNLESS OTHERWISE SPECIFIED:
DECIMAL DIMENSIONS INCLUDING HOLE SIZES MAY VARY ±.005
FRACTIONAL DIMENSIONS INCLUDING HOLE SIZES MAY VARY ±1/64
MACHINED ANGLES MAY VARY ±1°
SHEARED ANGLES MAY VARY ±.25°
BROKEN ANGLES MAY VARY ±1°
ECCENTRICITY BETWEEN ANY DIAMETERS ON THE SAME CENTERLINE SHALL NOT EXCEED .010 TOTAL INDICATOR READING.
ALL DIMENSIONS ARE FINISH DIMENSIONS INCLUDING APPLIED FINISH AND ARE GIVEN IN INCHES.

COLLINS-RADIO CO.
-CEDAR RAPIDS, IOWA-
14214-PH-51-93
SIGNAL CORPS
REVIEWED PME
APPROVED HLY
PME
DATE 17 JAN 56

TERMINAL-INSULATED

SCALE 4/1

DEPARTMENT OF THE ARMY
SIGNAL CORPS ENGINEERING
LABORATORIES
FORT MONMOUTH NEW JERSEY
SM-B-249269